



iOS and Android monitor mix application for the Si Series consoles

USER GUIDE

V1.4 Nov 2023

IMPORTANT

Please read this guide carefully before using ViSi Listen software for the first time.



© Harman International Industries Ltd. 2023 All rights reserved.

Parts of the design of this product may be protected by worldwide patents. Soundcraft is a trading division of Harman International Industries Ltd. Information in this manual is subject to change without notice and does not represent a commitment on the part of the vendor. Soundcraft shall not be liable for any loss or damage whatsoever arising from the use of information or any error contained in this manual. No part of this manual may be reproduced, stored in a retrieval system, or transmitted, in any form or by any means, electronic, electrical, mechanical, optical, chemical, including photocopying and recording, for any purpose without the express written permission of Soundcraft.

Harman International Industries Limited,
West Side 2, London Road Apsley, HP3 9TD,
United Kingdom
Tel: +44 (0)1707 665000

<http://www.soundcraft.com>

Soundcraft ViSi Listen is an iOS and Android application that allows remote control of mix bus contribution levels for Si Impact, Si Performer, Si Expression, and Si Compact mixing consoles wirelessly. Connect your Apple or Android Device to a Wireless access router which is connected to the Harman HiQnet® Ethernet port of the console.

With ViSi Listen, musicians and performers are free to perform whilst having control of their monitor mixes directly from their Apple or Android device. Coupled with access control settings on Si Impact, Si Performer, Si Expression, and Si Compact consoles, musicians can have the control they need without giving them access to FOH levels, channel & bus processing, and other parameters.

Applications:

- Control monitor mix bus contribution levels
- Allow musicians & performers to adjust their own monitor mix
- Allow multiple users on the same console to control their own mixes
- Create custom View Groups for quicker navigation and tailored channel setup

ViSi Listen Console Software Requirements:

(Latest software available on the Soundcraft website)

Si Impact: 1.2 build or higher

Si Performer: 1.8 build or higher

Si Expression: 1.8 build or higher

Si Compact: 3.3 build or higher

****Please make sure your console is updated before using this software.**

ViSi Listen Android Compatibility:

Android 10 or higher. (using ViSi_Listen V1.2 or later)

ViSi Listen iOS Compatibility:

iOS 12 or higher. (using ViSi Listen V1.3 or later)

ABOUT THIS MANUAL

This manual is intended as a guide for users new to the ViSi Listen iPad and Android (Pads) application; it covers basic setup requirements on the Si consoles, ViSi Listen specific settings on the iPad and describes the functionality offered by the ViSi Listen app.

Owing to the vast number of routers and similar devices available, it does not cover setup and management of the wireless router or similar devices used in the network.

This manual assumes familiarity with the Apple iPad and working knowledge of the Soundcraft consoles intended for use with ViSi Listen.

Examples illustrated in this manual were tested using Apple iOS 9.3.2

The most basic typical setup is illustrated below — however other combinations are possible, including multiple Soundcraft consoles connected to the same wireless router and multiple iPad devices controlling the same console.



NOTE: It is recommended to use a dedicated wireless router for the 'console/ ViSi Listen' connection to avoid risk that other devices sharing the router will consume all the bandwidth.

NOTE: To prevent 'unauthorised' connections to your wireless system it is recommended that security is enabled on your router.

NOTE: Significant traffic or interference in the Wi-Fi domain may cause sluggish or unreliable operation; if you experience such problems we recommend you seek specialist advice from a Wi-Fi IT professional.

Console Setup

Setting IP Addresses

Before ViSi Listen can be used on-line, a network connection must be established between the iPad and console.

The simplest solution is to set the router as a DHCP server and set the consoles and iPad to use DHCP addressing.

Refer to the user guide of your console for details on how to adjust the console's IP address settings.

Console HiQnet connection point The HiQnet port is located on the rear of Si Impact, Si Expression, Performer and Compact consoles as a standard Ethernet input. There is a green LINK LED that indicates an electrical connection is established and a DATA LED that indicates data flow.

Router Setup

To create a working environment for ViSi Listen, you will need to carry out some initial setup of your network router.

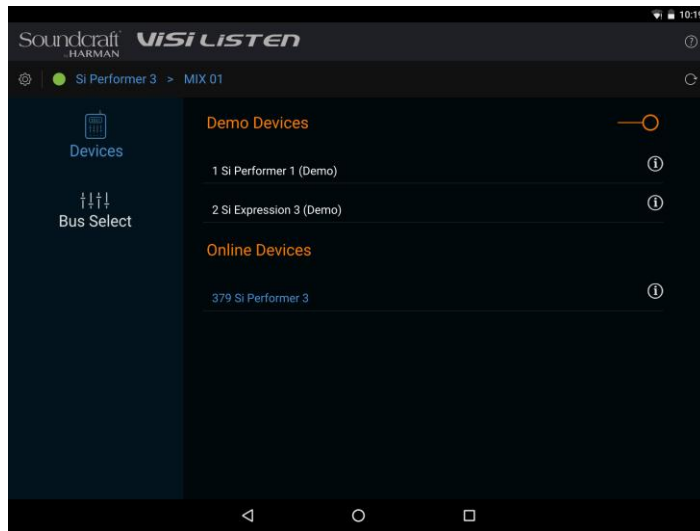
- **IP addressing** Within the router's control panel, there will be options to set IP addresses using DHCP or manual addressing. Depending on your requirements, setting the router to DHCP is recommended. Please refer to the user guide of your chosen router for instructions on how to access this control panel.

Welcome Screen – Device Selection

ViSi Listen connects to Soundcraft Si consoles and allows control of Mix Bus contribution levels using the HiQnet protocol via an Ethernet or WIFI connection.

To begin, ensure that your mixing console is connected to a network along with your personal device.

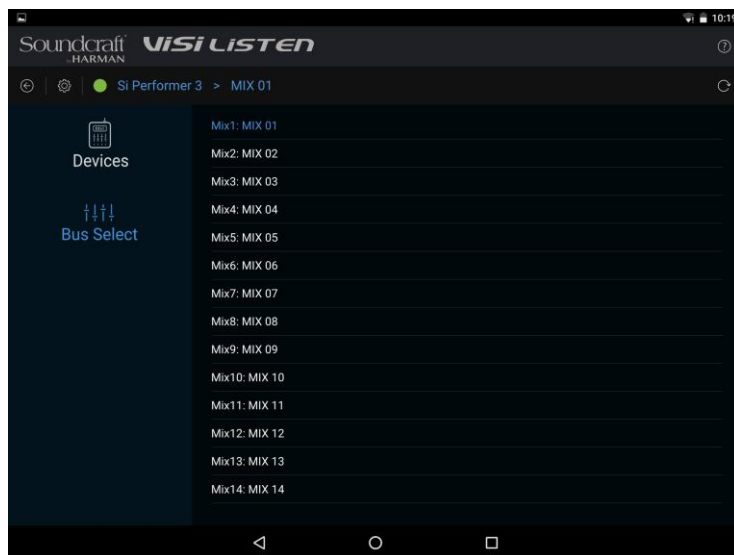
From there, your Si console(s) should be discovered by ViSi Listen in the device window. Select the console you want to control. Double-tap to proceed to the Bus Selection.



Welcome Screen - Bus Select

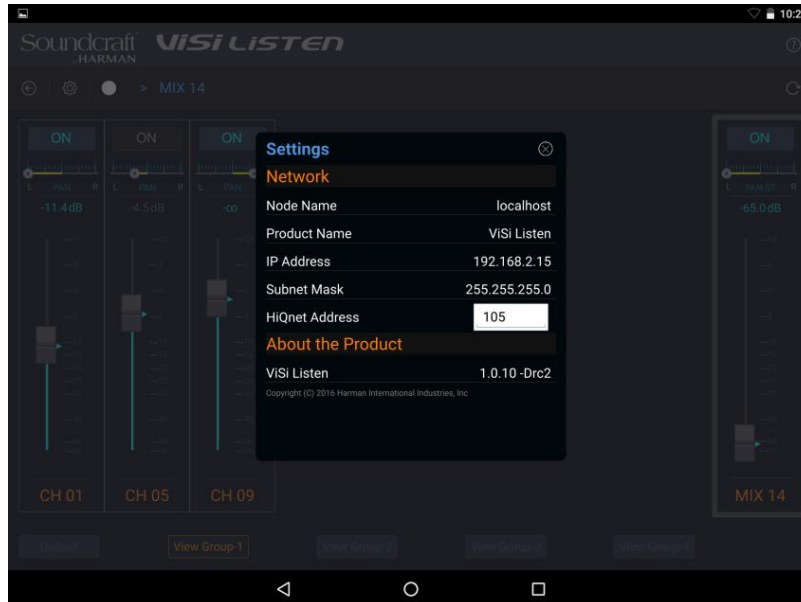
After selecting your device, now select the Mix Bus to control.

Access control on an Si console, if enabled, manages permissions of Mix Bus control based on HiQnet address. If you cannot select and control the Mix Bus you need, it may be because Access Control is enabled and your HiQnet address is not authorised. To adjust this, consult the console operator to assign your device's HiQnet address (visible in the settings tab above) to the mix bus you want to control.



1.1 Welcome Screen - Settings Screen

The Settings screen is where network settings can be viewed along with HiQnet settings. Your personal device's HiQnet address can be changed in this window as well.



1.2 Main Fader Page

The Contribution Levels page is where you can adjust your contribution levels for the Mix Bus you are controlling.

Additional controls include pan controls if the mix bus is stereo and the master volume for the mix if the Mix Master toggle is enabled.

At the bottom of the Contribution Levels page is the View Groups where custom channel views can be created.



1.3 View Group Page

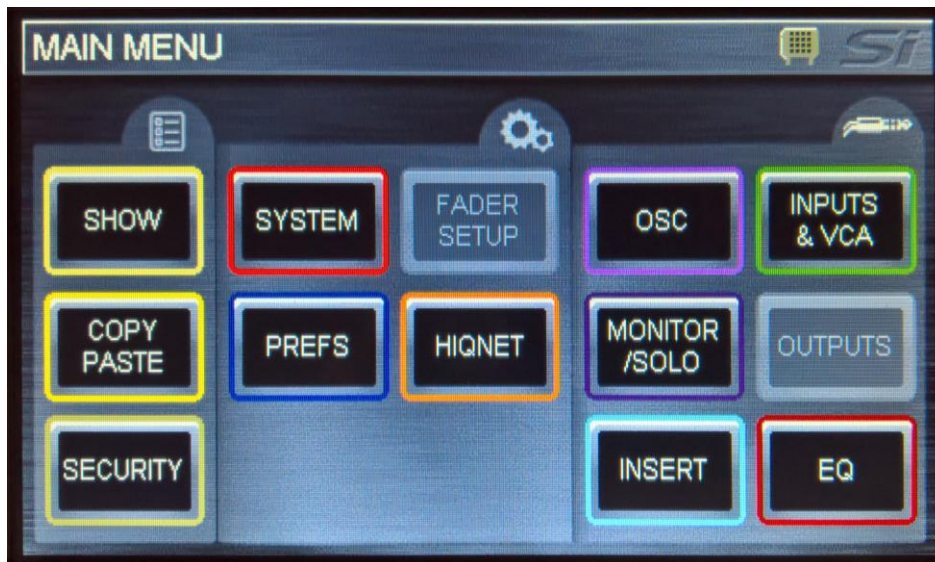
The View Groups allow customisation of the channels you can view and control. Press the '+' control to add channels and press the '-' control to remove channels from the view group.



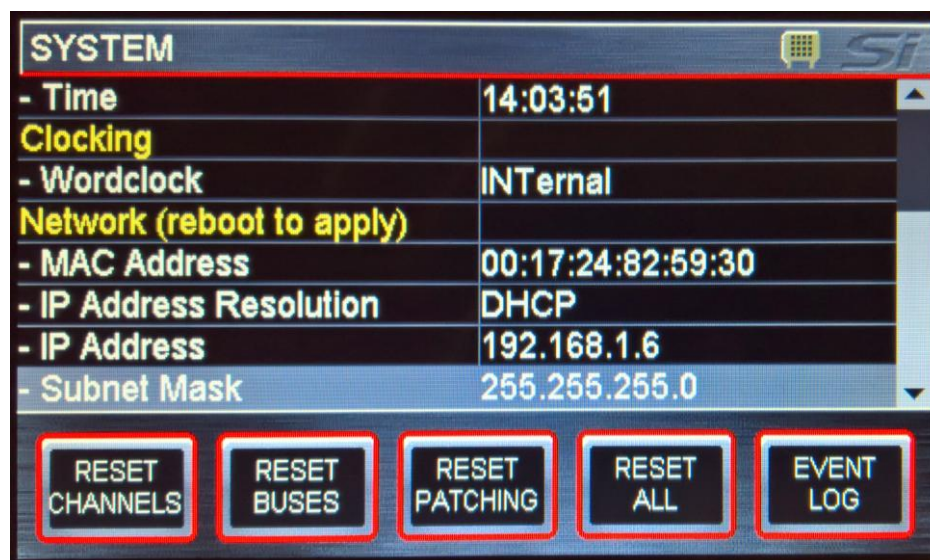
2.1 Console Setup

To enable ViSi Listen to work with your console certain parameters will need to be setup.

In the Consoles **'MAIN MENU'** Under Settings make sure the console has a Valid IP and HiQnet address setup.



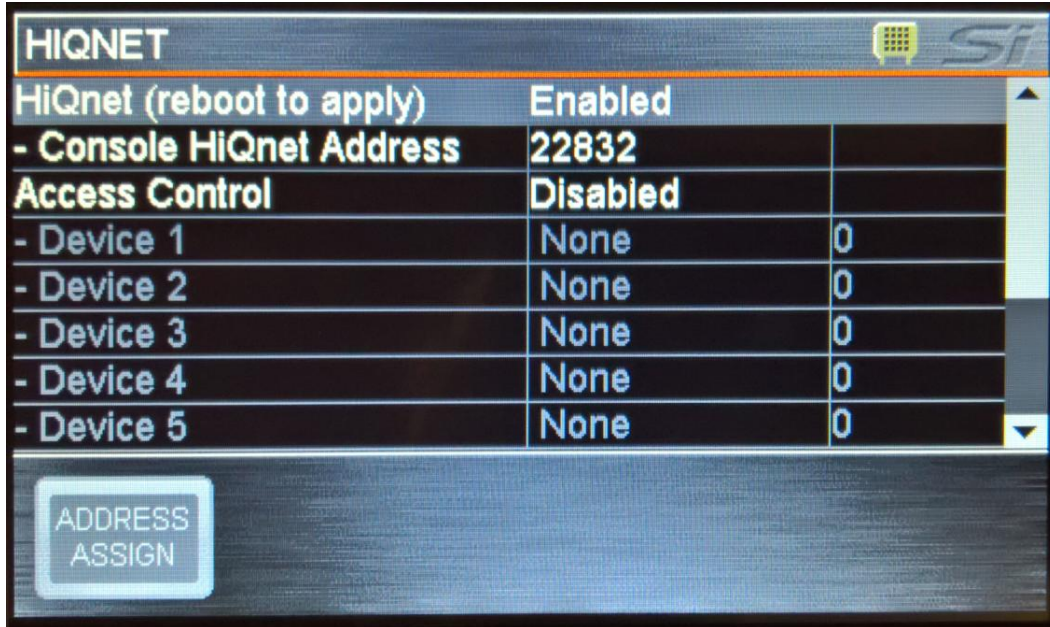
Select the **'SYSTEM'** Menu and confirm the console has a valid IP and HiQnet address



If you have any issues with setting a valid IP address please refer to your console's manual.

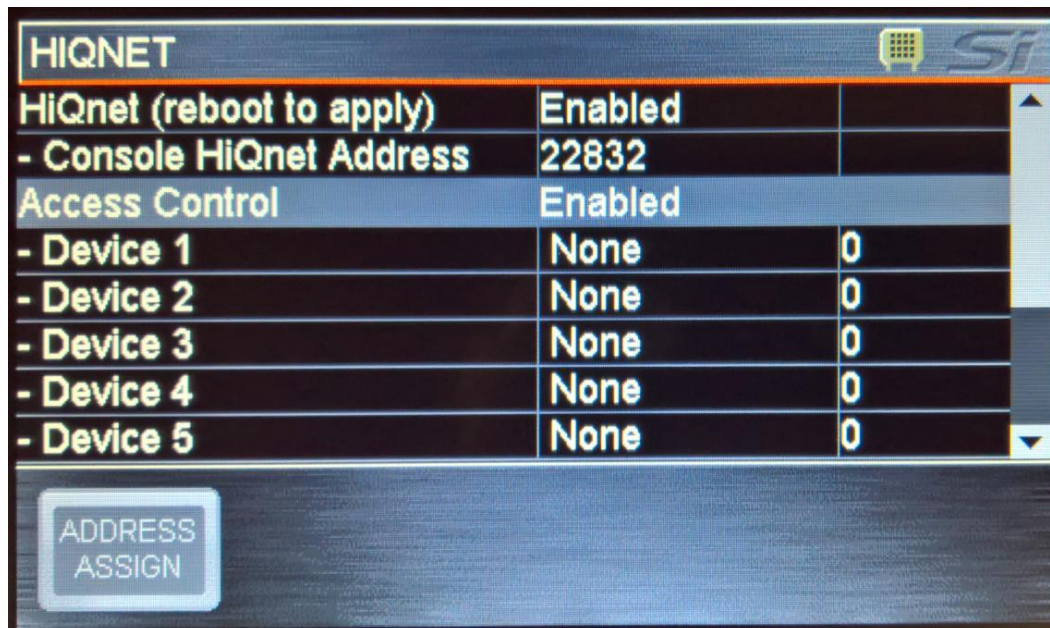
Note that all the devices on the network must have a **different** HiQnet address - this includes the console and all the mobile tablet devices that will be used with ViSi Listen to control the monitor mixes.

Next select the 'HiQnet' tab in the Main Menu.



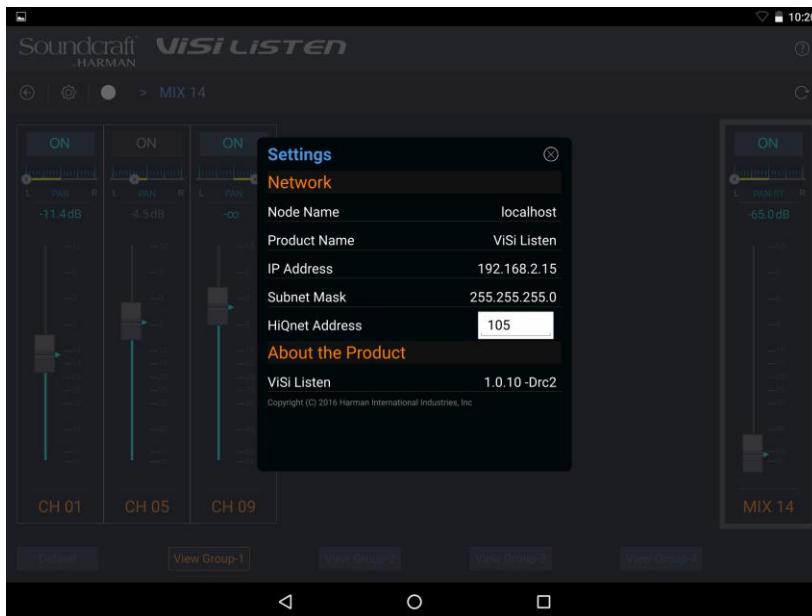
In this menu you are able to turn **ON** restricted Access Control (which then only enables certain devices to operate certain **MIX** sends)

Enable the access control by selecting in on the menu



Next it is necessary to set a Device ID in the right hand Column of the Si HiQnet menu page (on previous page) which matches the HiQnet address of the mobile tablet device you are using with ViSi Listen.

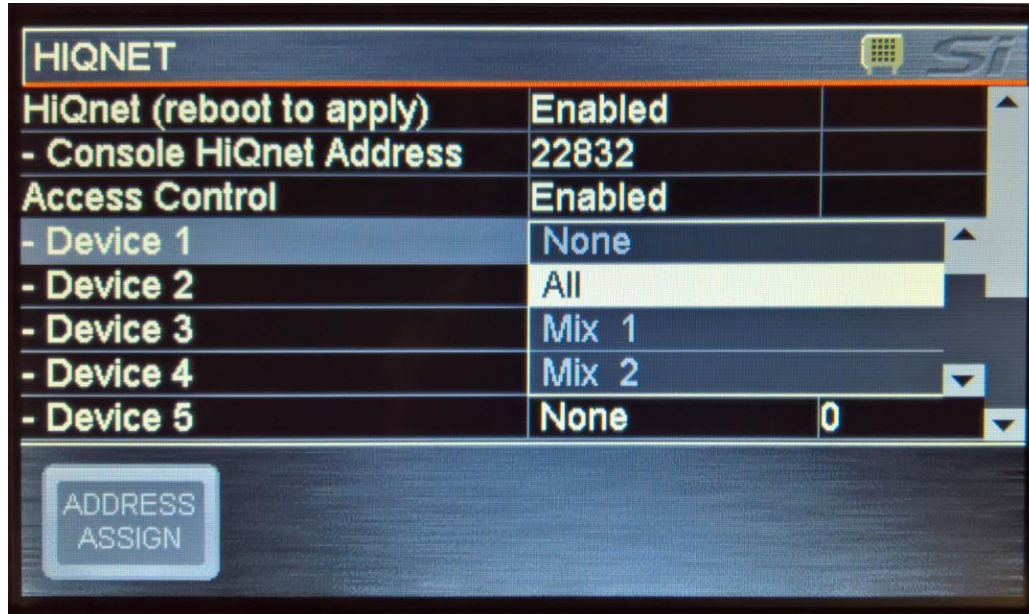
Each musician must have a different HiQnet address set on their mobile device, this is done by accessing the Settings page in ViSi listen:



In the above Example the HiQnet address of the device was 105 but will be changed to 12. This number then needs to be entered into the console's Device ID column as well:

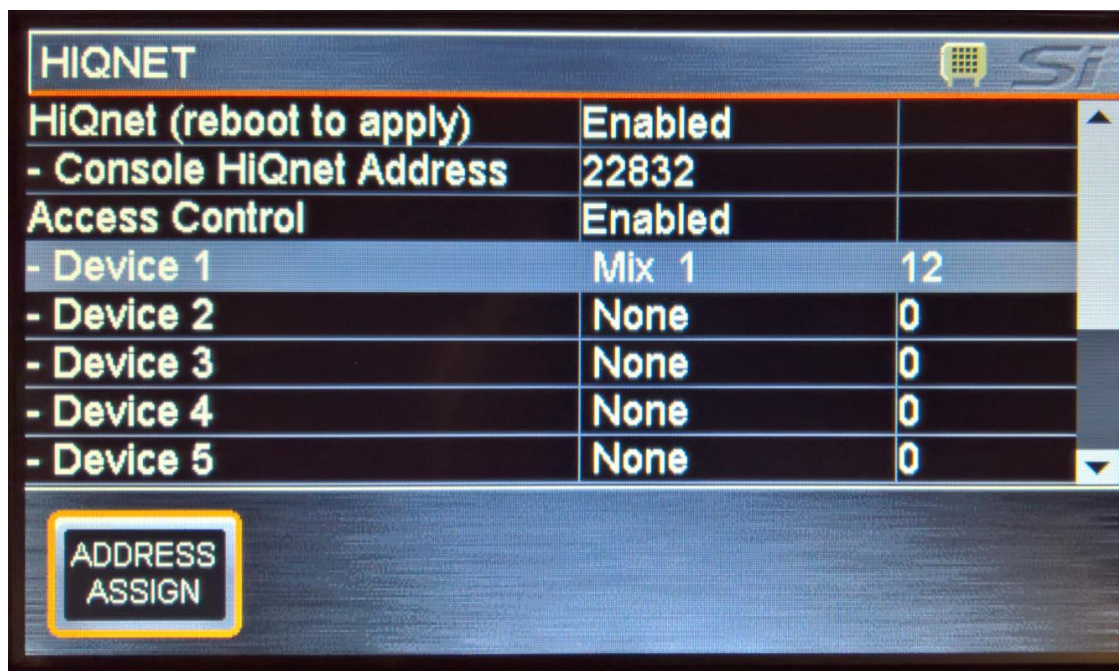


You are now able to select which Mix the device can control, a specific one, or ALL.



Here we have selected Mix 1 for access by the ViSi Listen device which has HiQNet address 12 assigned.

Repeat these steps to assign HiQNet addresses and bus access for your other mobile devices, making sure they all have a unique HiQNet address between 1 and 65,535 and they are all different to the console's own HiQNet address.



TROUBLESHOOTING

ViSi Listen is engineered to be as reliable and stable as possible given the limitations imposed when operating in an unlicensed wireless environment. In the unlikely event that ViSi Listen is not acting as expected carefully check the following:

- Is your console and tablet device software correct for ViSi Listen? Check the Software Download section for your console and ensure you have the latest version, also check the ViSi Listen page and ensure you are running the latest version of ViSi Listen on your iPad or Android device.
- Are you connected to the WiFi of the router used by the consoles? If a tablet device 'knows' more than one network and your ViSi Listen network is lost or drops out, the device will automatically switch to another known network — this is a function of the tablet OS. The network your tablet is currently using is shown in the ViSi Listen devices list. We advise switching off the 'Auto-join' option in the tablet's wifi settings to avoid it switching to another known network if a drop-out occurs.
- Are the IP addresses set correctly? Ensure if setting manual IP addresses that the range is valid and that no two devices on the network have the same address. This is required for all devices sharing the network used by ViSi Listen including any tablet devices and any non-HiQnet equipment. If using DHCP, double check that all devices on the network are set for DHCP as the method to resolve the IP address and that your router is set as a DHCP server.



NOTE: It is recommended to restart the console following a change to the console's IP address to ensure this is picked-up by all devices.

- Are the HiQnet addresses set correctly? Ensure all HiQnet devices on the network have their own unique HiQnet address, this includes all tablet devices running ViSi Listen and all consoles on the network. HiQnet addresses must be within the range 1 to 65,535.



NOTE: It is recommended to restart the console following a change to the HiQnet address to ensure this is picked-up by all devices.

- Is HiQnet On/Enabled on the console? Certain events and actions will result in the HiQnet setting default-ing to Off/ Disabled. HiQnet must be On/Enabled on all devices you wish to control with ViSi Listen.
- Have you rebooted since changing HiQnet, IP Address or Subnet Mask on Si Impact, Expression, Performer or Compact? Some of these settings cannot be changed 'live' and require the console to be rebooted before new settings are shown and/or take.
- ViSi Listen goes off-line regularly, what can I do? It needs specialist equipment to analyse the RF environment in which you are working; but ensuring the wireless router is centrally located, enabling security on the router, switching to another channel, or operating in another band (such as 5.0GHz if your tablet and router support this) can all help avoid some of the inevitable wireless traffic. Soundcraft recommends enabling security on your Wi-Fi router to prevent unwanted connections by mobile devices which could interfere with the operation of the network.