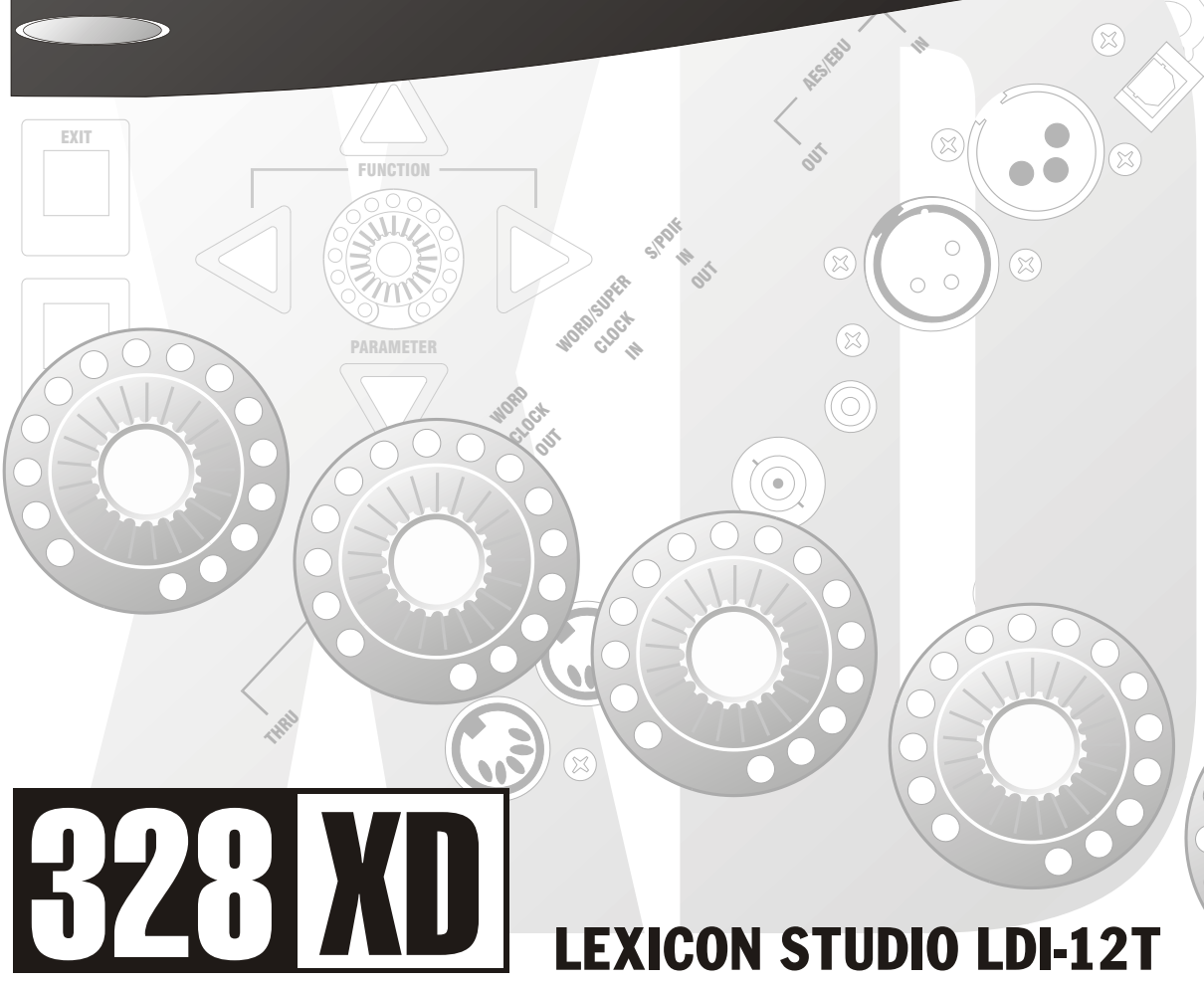
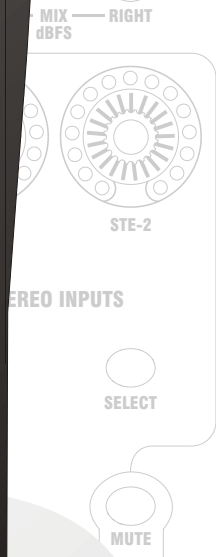
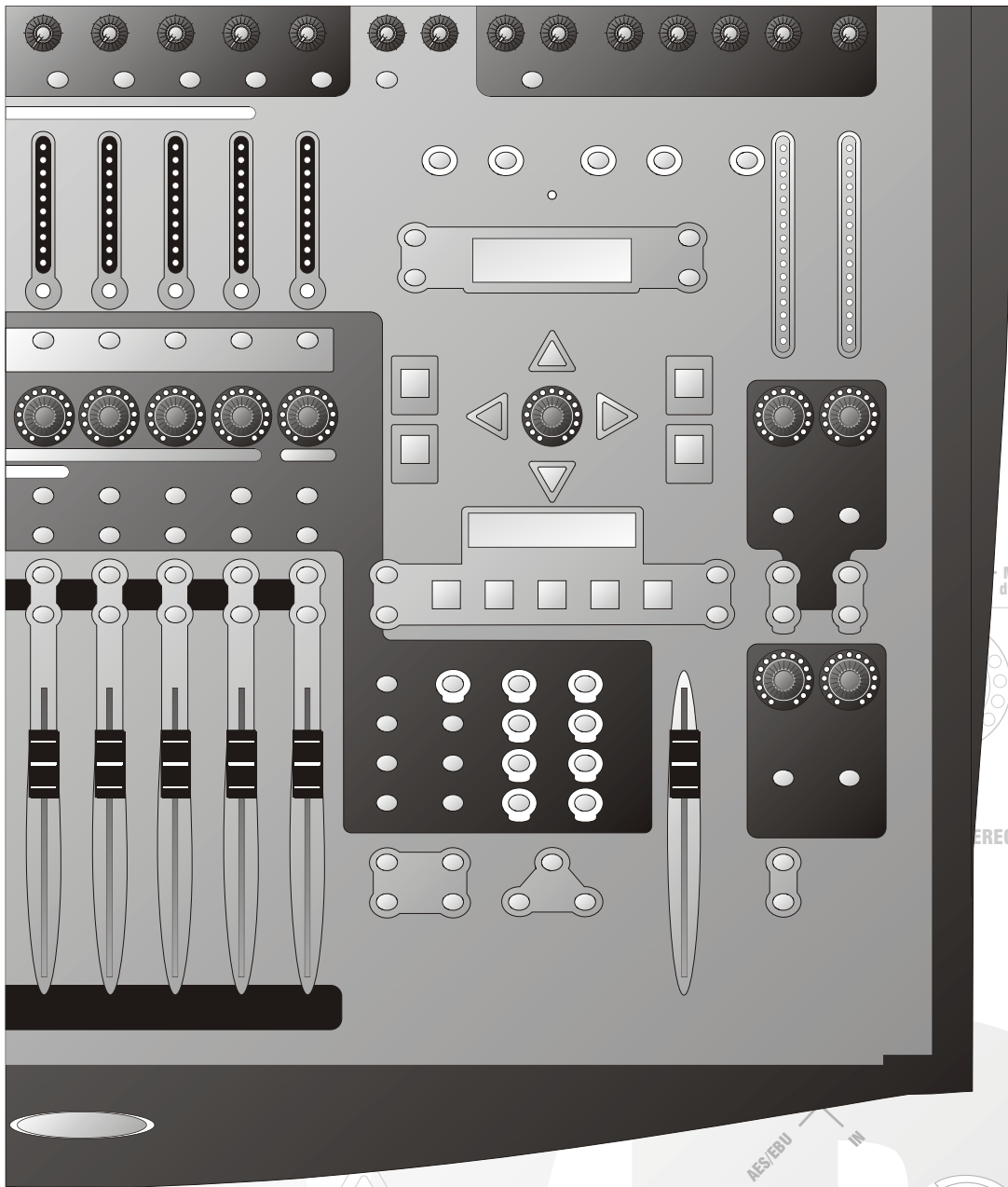




# Soundcraft



# 328 XD

## LEXICON STUDIO LDI-12T

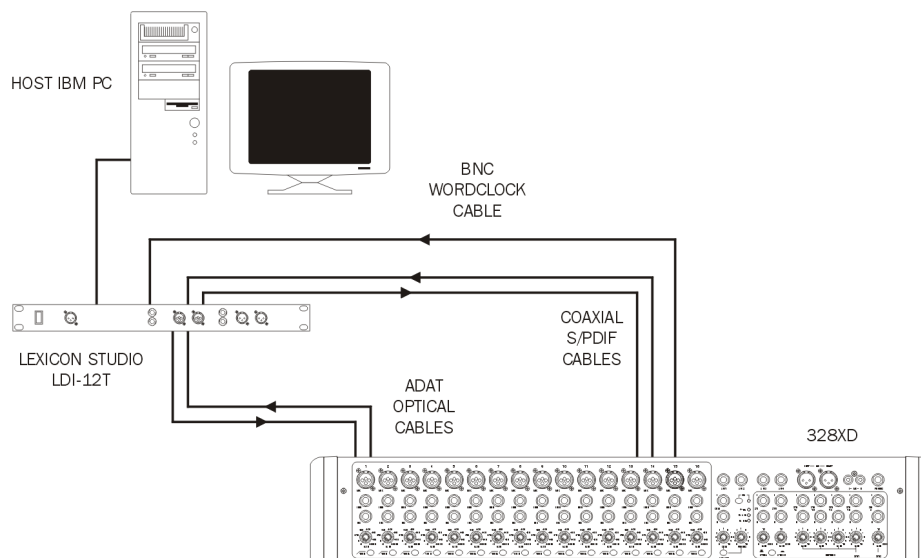
# **328XD AND LEXICON STUDIO LDI-12T**

Connecting the system	2
328XD Configuration	3
LDI-12T Configuration	5

## CONNECTING THE SYSTEM

### Audio Connections

Connect audio connections as shown in the diagram below. ADAT Optical cables must be connected from the ADAT Out port of the Lexicon Studio LDI-12T card to an ADAT In port of the 328XD and vice versa. Coaxial digital S/PDIF cables can also be connected from the Lexicon Studio LDI-12T S/PDIF output to the 328XD S/PDIF input and vice versa. Connect the 328XD wordclock output to the wordclock input of the Lexicon Studio LDI-12T with a suitable BNC wordclock cable.



The ADAT connections allow digital transfer of either direct output for input channels 1-16 to the Lexicon Studio LDI-12T card, or the 328XD's 8 Group outputs. The S/PDIF output from the console can be assigned to either the Mix output or 1 of 3 stereo auxiliary outputs. The 328XD S/PDIF Input can be configured to be a digital Stereo Input or as a digital 2-Track Return. The wordclock cable will allow the Lexicon Studio LDI-12T to synchronize to the internal clock of the 328XD.

## 328XD CONFIGURATION

### Wordclock

To configure the 328XD as the wordclock master, enter the 328XD Menu pages by pressing the <MENU> button on the right hand side of the LCD display. Using the PARAM encoder beneath the display, scroll up or down until the 'Clock Source Sel' menu is highlighted, and press <ENTER>. Here, either the internal 44.1kHz clock or the internal 48kHz clock must be selected, depending on the sampling rate at which work is to be carried out. Press <MENU> to return to the menu pages.

```
<Wordclock Src.>
Internal:48.0kHz
```

### Tape Ports

To ensure that the 328XD Tape Ports are set to ADAT to work with the Lexicon Studio LDI-12T, enter the 328XD Menu pages by pressing the <MENU> button on the right hand side of the LCD display. Using the PARAM encoder beneath the display, scroll up or down until the 'Tape Port Select' menu is highlighted. Press <ENTER> and press the Up cursor key until the '<Tape Ch17-24 >' menu page is displayed. Using the PARAM encoder set the Bank Source to ADAT.

```
<Tape Ch17->24 >
Bank Source:ADAT
```

Press the Down cursor key once to set the wordlength. The Lexicon Studio LDI-12T is capable of 24-bit recording, and so for optimum results, 24-bit wordlength can be selected here. If your audio sequencer software does not allow 24-bit recording, 20-bit or 16-bit should be selected. The sequencer manuals should be consulted for further information. The wordlength is set on the 328XD with the PARAM encoder. Press <MENU> to return to the menu pages.

```
<Tape Ch17->24 >
Wordlength: 24
```

### S/PDIF Input

The 328XD S/PDIF input can be routed to any one of the following inputs:

- Stereo Input 1;
- Stereo Input 2;
- FX Return 1;
- FX Return 2;
- 2 Track Tape Return,

provided that the 328XD AES/EBU input or internal oscillator has not already been assigned to that input. Commonly the Lexicon Studio LDI-12T S/PDIF output would best be routed to a Stereo Input or the 2 Track Tape Return input.

**NOTE:** Assigning a digital source to an input will override an analogue signal, if present.

Press <MENU> to enter the menu pages, scroll through the pages until the 'SPDIF I/P Setup' is highlighted and press <ENTER>. Using the PARAM encoder, select the destination for the S/PDIF input. Press <MENU> to return to the menu pages.

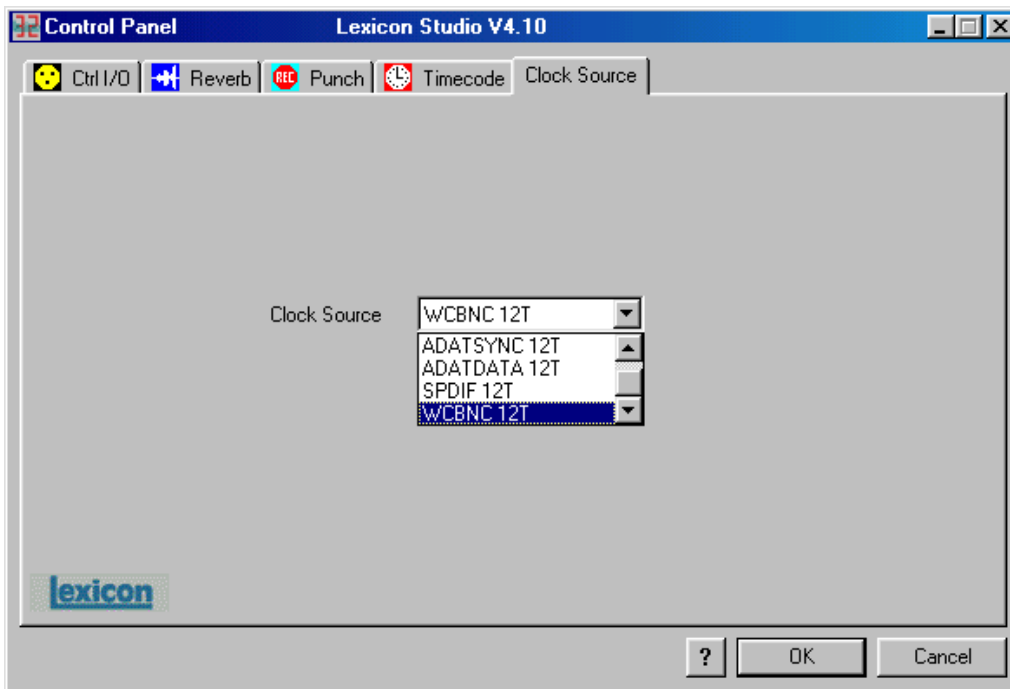
**NOTE:** If the S/PDIF input is not required, NOWHERE should be selected in the menu.

```
< SPDIF Input >  
Route To: STE 1
```

## LDI-12T CONFIGURATION

### Wordclock

The Lexicon Studio LDI-12T must now be set up to receive the wordclock transmitted by the 328XD. Open the Lexicon Studio Control Panel, by double clicking the Lexicon Studio icon in the taskbar, and select 'Clock Source' from the page options.



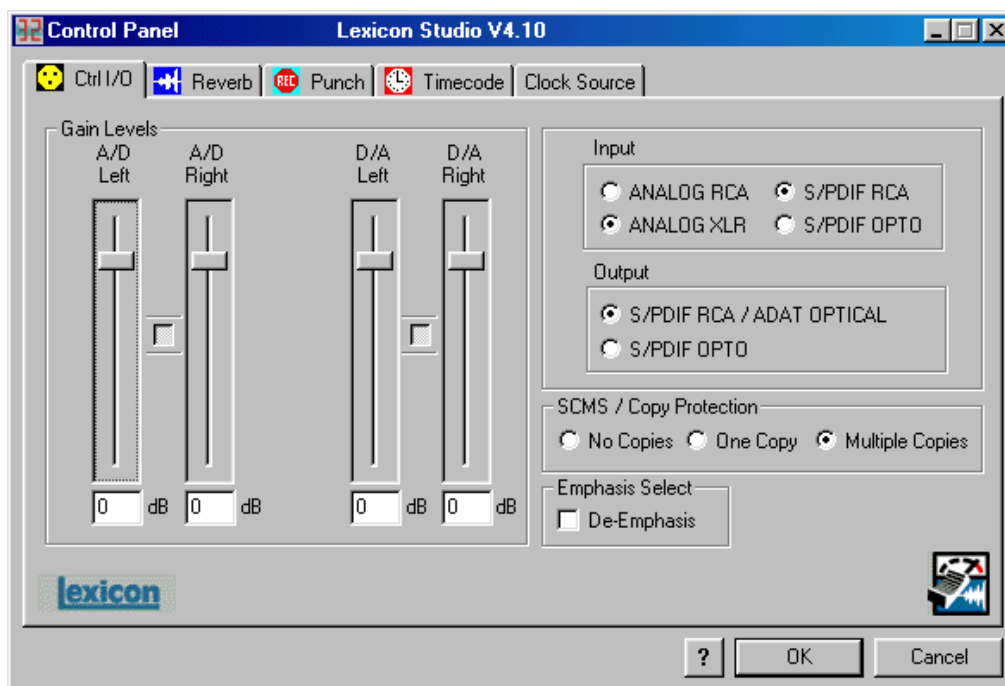
Click on the drop down menu and select WCBNC as the clock source input.

If the BNC wordclock cable is connected, the Lexicon Studio LDI-12T should client to the clock on the BNC wordclock input.

If a wordclock cable is not connected, the Lexicon Studio LDI-12T must client to the clock on one of its ADAT or S/PDIF inputs. Set the Lexicon Studio LDI-12T to use the clock source from the ADATDATA 12T input or the SPDIF 12T Input as required using the method described above.

### Audio Data

The Lexicon Studio LDI-12T must now be set up to transmit and receive audio data to and from the 328XD. Open the Lexicon Studio Control Panel, by double clicking the Lexicon Studio icon in the taskbar and select 'Ctrl/I/O' from the page options.



Leave the virtual faders for the input and output level at their default positions, this is correct for the 328XD.

Now select S/PDIF RCA in the 'Input' settings, this forces the Core32 to receive the ADAT signal from the 328XD.

The in the 'Output' settings select S/PDIF RCA / ADAT OPTICAL, this forces the Core32 to send audio from the ADAT port to the 328XD.

Please refer to the Lexicon Studio documentation for other system settings.





**SOUNDCRAFT**

HARMAN INTERNATIONAL INDUSTRIES LTD  
CRANBORNE HOUSE  
CRANBORNE ROAD  
POTTERS BAR  
HERTS EN6 3JN UK  
TEL: +44 (0) 1707 665000  
FAX: +44 (0) 1707 660742  
EMAIL: [info@soundcraft.com](mailto:info@soundcraft.com)

**SOUNDCRAFT USA**

1449 DONELSON PIKE  
NASHVILLE TN 37217 USA  
TEL: 1-615-360-0471  
FAX: 1-615-360-0273  
EMAIL: [soundcraft-usa@harman.com](mailto:soundcraft-usa@harman.com)

**[www.soundcraft.com](http://www.soundcraft.com)**