

Soundcraft



MIX — RIGHT
dBFS



STEREO INPUTS

SELECT

MUTE



EXIT

FUNCTION

PARAMETER

WORD/SUPER
CLOCK IN

WORD
CLOCK OUT

AES/EBU
OUT

IN

S/PDIF
IN

OUT

THRU

328 XD

SOUNDSCAPE MIXTREME

328XD AND SOUNDSCAPE MIXTREME

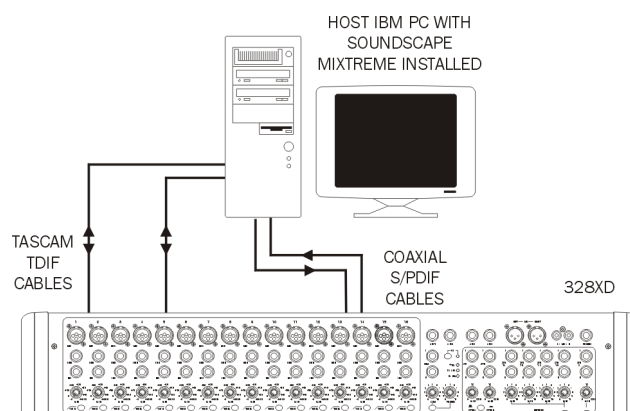
| | |
|------------------------|---|
| Connecting the system | 2 |
| 328XD Configuration | 3 |
| Mixtreme Configuration | 5 |

CONNECTING THE SYSTEM

Connections

Connect audio connections as shown in the diagram below. TDIF cables must be connected from the 2 TDIF I/O ports of the Mixtreme card to the 2 TDIF I/O ports of the 328XD.

The Mixtreme card is also available with an S/PDIF option. If your Mixtreme card has the S/PDIF option installed, coaxial digital S/PDIF cables should also be connected from the Mixtreme S/PDIF output to the 328XD S/PDIF input and vice versa.



The TDIF connections allow digital transfer of either direct outputs for input channels 1-16 to the Mixtreme card, or the 328XD's 8 Group outputs. The S/PDIF output from the console can be assigned to either the Mix output, 1 of 3 stereo auxilliary outputs, pairs of Group outputs or the Control Room output. The 328XD S/PDIF Input can be configured to be a digital Stereo Input or as a digital 2-Track Return.

328XD CONFIGURATION

Wordclock

To configure the 328XD as the wordclock host, enter the 328XD menu pages by pressing the <MENU> button on the right hand side of the LCD display. Using the PARAM encoder beneath the display, scroll up or down until the 'Clock Source Sel' menu is highlighted, and press <ENTER>. Here, either the internal 44.1kHz clock or the internal 48kHz clock must be selected, depending on the sampling rate at which you wish to work. Press <ENTER> to set the sample rate and <MENU> to return to the menu pages.

```
<Wordclock Src.>
Internal:48.0kHz
```

Tape Ports

To ensure that the 328XD Tape Ports are both set to TDIF to work with the Mixtreme, enter the 328XD menu pages by pressing the <MENU> button on the right hand side of the LCD display. Using the PARAM encoder beneath the display, scroll up or down until the 'Tape Port Select' menu is highlighted. Press <ENTER> and press the Up cursor key until the '<Tape Ch17-24 >' menu page is displayed. Using the PARAM encoder, set the Bank Source to TDIF.

```
<Tape Ch17->24 >
Bank Source:TDIF
```

Press the Down cursor key once to set the wordlength. The Mixtreme is capable of 24-bit recording, and so for optimum results, 24-bit wordlength can be selected here. If your audio sequencer software does not allow 24-bit recording, 20-bit or 16-bit should be selected. The sequencer manuals should be consulted for further information. Set the desired wordlength on the 328XD using the PARAM encoder.

```
<Tape Ch17->24 >
Wordlength: 16
```

Press the Down cursor key again and set the sample rate flag setting to the same sample rate as set in the wordclock setting above.

```
<Tape Ch17->24 >
S/Rate Flag:48k0
```

Press the Down cursor key once more and set the '<Tape 25-32>' settings to the same settings as in the '<Tape 17-24>' pages, as described above.

S/PDIF Input

The 328XD S/PDIF input can be routed to any one of the following inputs:

- Stereo Input 1;
- Stereo Input 2;
- FX Return 1;
- FX Return 2;
- 2 Track Tape Return,

provided that the 328XD AES/EBU input or internal oscillator has not already been assigned to that input. Commonly the Mixtreme S/PDIF output would best be routed to Stereo Input 2, or the 2 Track Tape Return input.

NOTE: Assigning a digital source to an input will override an analogue signal, if present.


Press <MENU> to enter the menu pages, scroll through the pages until the 'SPDIF I/P Setup' is highlighted and press <ENTER>. Using the PARAM encoder, select the destination for the S/PDIF input, press <ENTER> to set and <MENU> to return to the menu pages.

```
< SPDIF Input >
Route To: STE 1
```

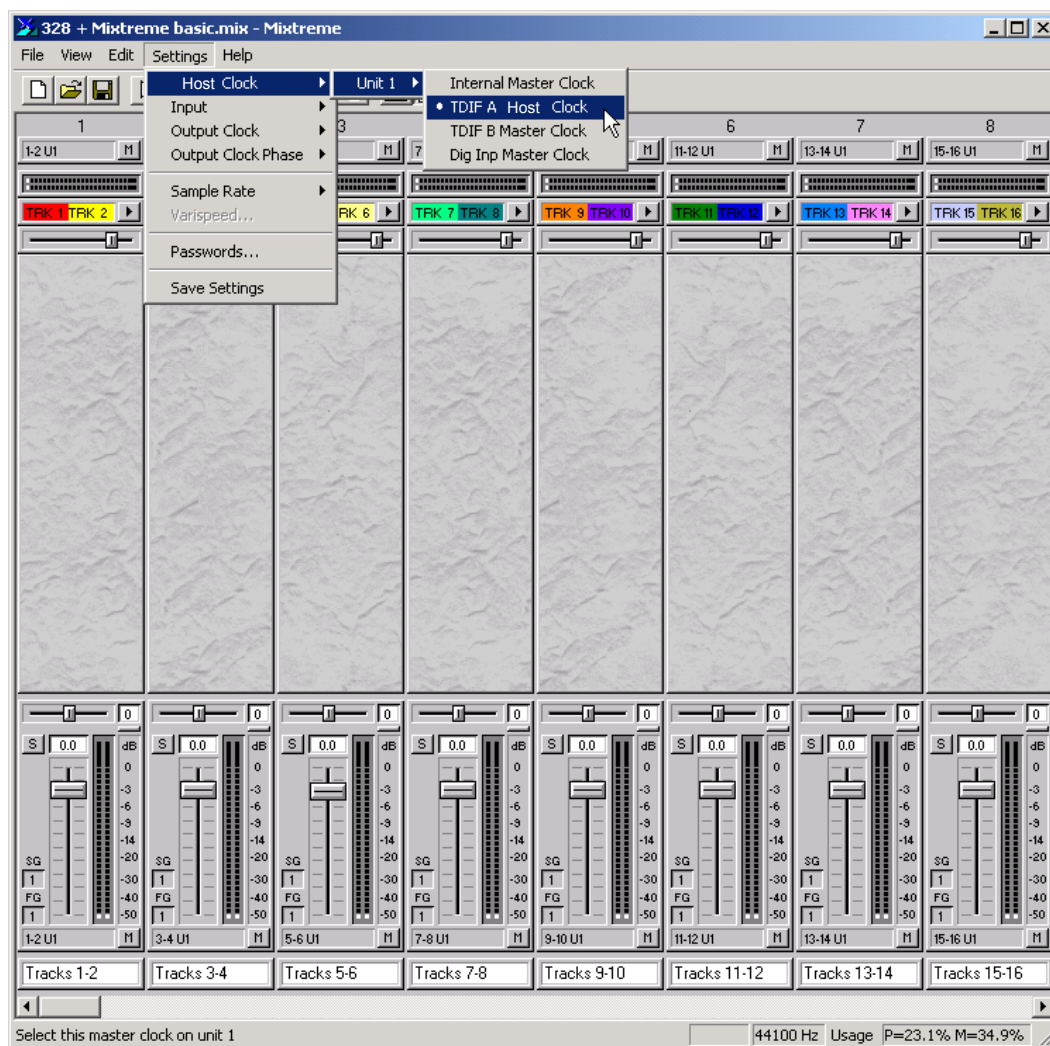
NOTE: If the S/PDIF input is not required, NOWHERE should be selected in the menu.

MIXTREME CONFIGURATION

Wordclock

The Mixtreme must be set up to receive the wordclock transmitted by the 328XD. Open the Mixtreme mixer from the Mixtreme icon  on the Windows taskbar.

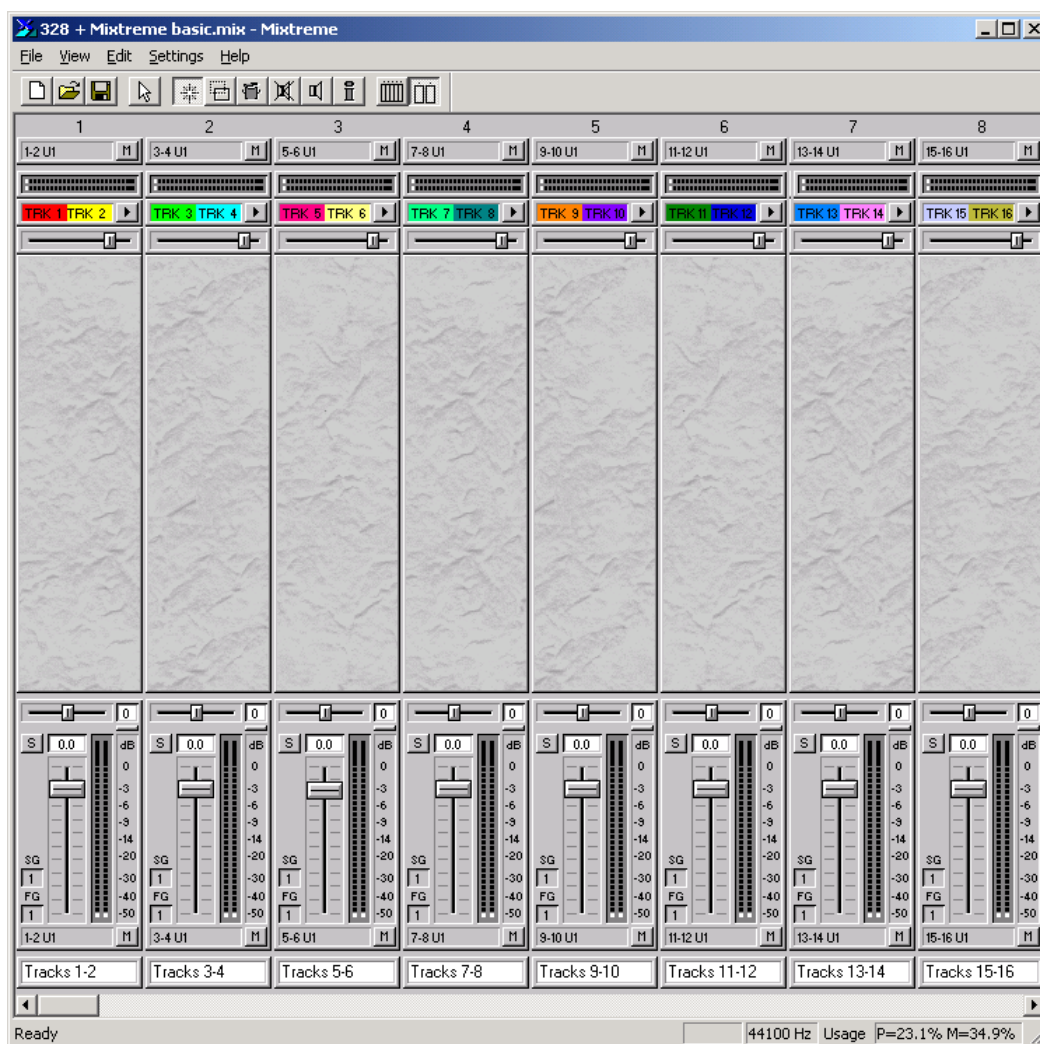
Under the Settings menu, set the Host Clock to TDIF Host Clock A.



NOTE: To save these settings, click on the 'Settings' menu and select 'Save Settings'.

Mixtreme Mixer Setup

The Mixtreme mixer software allows full customisation for the routing of the 16 inputs and outputs available on the Mixtreme card. A basic setup utilising all 16 inputs and outputs is shown below. The mixer can be fully customized depending on the required configuration - consult the Mixtreme manual for more information.



SOUNDCRAFT

HARMAN INTERNATIONAL INDUSTRIES LTD
CRANBORNE HOUSE
CRANBORNE ROAD
POTTERS BAR
HERTS EN6 3JN UK
TEL: +44 (0) 1707 665000
FAX: +44 (0) 1707 660742
EMAIL: info@soundcraft.com

SOUNDCRAFT USA

1449 DONELSON PIKE
NASHVILLE TN 37217 USA
TEL: 1-615-360-0471
FAX: 1-615-360-0273
EMAIL: soundcraft-usa@harman.com

www.soundcraft.com