

SOUNDCRAFT

A Division of Harman International Industries Ltd
CRANBORNE HOUSE
CRANBORNE ROAD
POTTERS BAR
HERTS EN6 3JN
UK



Virtual Si V5.2 User Guide

Contents

Document Version:	2
Related Products:.....	2
About Virtual Si	2
Minimum System Requirements	2
Installing the Application	2
About This Manual.....	2
Starting Virtual Si.....	3
Introduction to V5.2	3
The Toolbar	3
Clipboard group.....	3
Zoom group	3
Panels group	4
Touchscreen group	4
Cue Control group.....	4
Config Group.....	4
Copy & Paste.....	4
Si Compact Faders in Virtual Si.....	4
Fader Assign.....	5
Security	5
Adding Modules & Stageboxes.....	5
Adding Modules	5
Adding Stageboxes.....	6
Important Notes re. Stagebox Configurations:	8
Docking Window	8
Appendix A- Operation Principles & Special Keys	9
Support	10

Document Version:

V3.0 – Updated to support Virtual Si V5.2

Related Products:

Si Compact V2.0

Si 1/2/3 Including '+' variants V4.2

Virtual Si V5.2

About Virtual Si

Virtual Si is an offline graphic system and editor for the Soundcraft Si Compact and Si Series. In addition, because it looks and works like the real console, it can act as a fantastic training aid for anyone who has either not had the chance to see a real Si, or who wants to brush up their Si knowledge.

Minimum System Requirements

PC running Windows XP SP2 or later, or Windows 7

3.0GHz Pentium or similar processor

2GB RAM minimum

100MB free hard drive space for application installation

USB port (for transfer of Shows to/from console)

Display Resolution 1280x800

Virtual Si should also run on newer Mac with Leopard OS, running native Windows XP SP2 or later.

Please note we can't guarantee operation on every possible combination of PC hardware and Windows version, but if you find one that doesn't work and you have satisfied the minimum requirements above, please let us know.

Installing the Application

To install the application once you have unpacked the ZIP file:

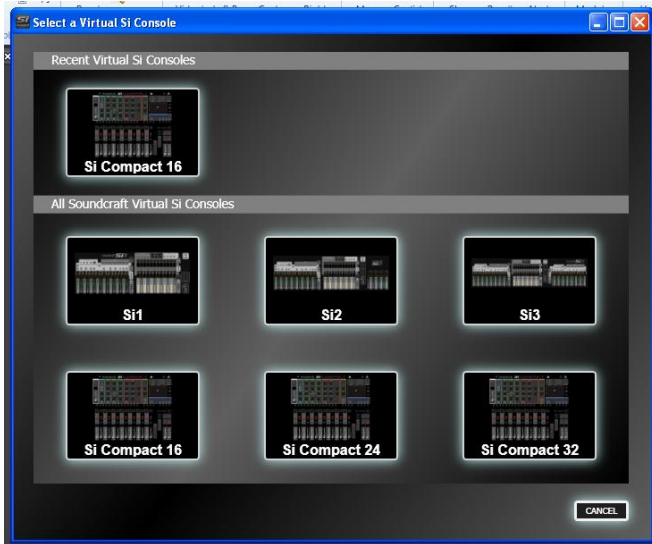
1. Uninstall any previous versions of Virtual Si.
2. Double-click the application to start the installer and follow the on-screen instructions.
3. The installer will place a shortcut to Virtual Si on your desktop and in your start menu.

About This Manual

This manual covers functionality specific to Virtual Si consoles, for specific functionality please refer to the user guide for your console.

Starting Virtual Si

When starting Virtual Si you are presented with a screen depicting all console types available in Virtual Si and the 'last' console you used... To begin using Virtual Si simply click on the console type you wish to use/create.



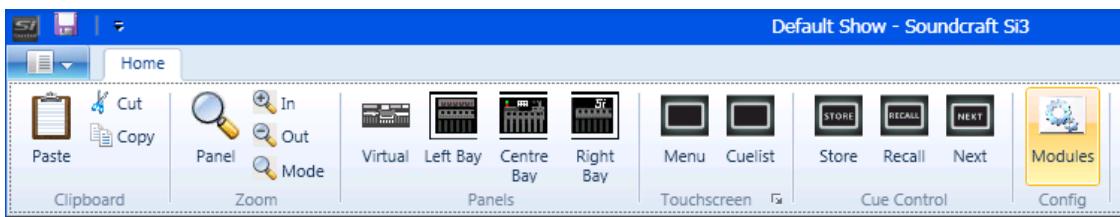
Introduction to V5.2

The new Virtual Si Editor supports Si Series software V4.2 and Si Compact V2.0

NOTE: It is important that any show created on the editor matches the hardware and software configuration of the system that you intend to use else a 'conflict' will arise when the show is loaded and patch data may be lost or unusable.

NOTE: Some screens and functionality that relate directly to console hardware such as word clock, mac address, LED dimming, security and time/date are either unavailable or grayed-out in the Virtual Si.

The Toolbar



Clipboard group

- Paste - When editing a channel name on an OLED, click Paste to insert the contents of the clipboard.
- Cut - Click Cut to cut the currently selected text of the channel name to the clipboard.
- Copy - The Copy button copies the currently selected text to the clipboard.

Zoom group

- Panel - Click to automatically scale the virtual panel to fit the main window.
- In - Zooms in to the panel.
- Out - Zooms out from the panel.
- Mode - Toggle Zoom Mode – When in zoom mode, the cursor changes to a magnifying glass; click on the virtual panel to zoom in at the cursor, right click to zoom out. Click Zoom Mode again to exit Zoom Mode.

Panels group

NOTE: Not Si Compact.

Virtual - Click Virtual to automatically scale the virtual panel to fit the main window.

Left - Click to zoom in to the left bay.

Centre - Centre zooms in to the centre (outputs) bay.

Right - In Si2 and Si3 virtual consoles, clicking Right zooms into the right bay.

Touchscreen group

Menu - Displays the touchscreen main menu panel.

Cue List - Displays the touchscreen cuelist panel.

Cue Control group

Store - Stores a cue.

Recall - Recalls the current cue in the cue list.

Next - Recalls the next cue in the cue list.

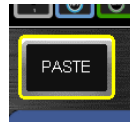
Config Group

See Adding Modules & Stageboxes

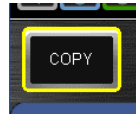
Copy & Paste

Copy and Paste functions for the Si Compact in implemented slightly differently in Virtual Si to avoid the need to press two buttons at the same time to PASTE the clipboard back to a channel. Just as the console operates the SELEct channel or bus is copied immediately you enter COPY & PASTE and items may be added or excluded by toggling the relevant ACS (Assignable Channel Strip) icon using the mouse.

The PASTE button below the ACS will toggle the mode from COPY to PASTE, now you may SELEct destinations to paste the clipboard contents to.



To copy another channel press the button below the ACS now labeled COPY and the system reverts to COPY mode again.



Si Compact Faders in Virtual Si

The view of an Si Compact in virtual is the same for all variants of the console and is constructed around the smallest 16 input (14+2 fader) configuration; hovering the cursor over the left or right most fader will reveal the 'scroll right' (left) options.



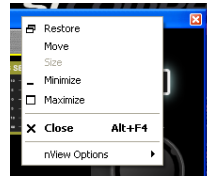
Another variation on the Si Compact in Virtual Si is the addition of the 'CONTROL' group to the right of the ACS. The CONTROL group provides a fader, ON key and SOLO key for the currently SELEcted channel or bus, this functionality is complemented by the left and right navigation arrows which change position of the active SELEct by 1 slot allowing access to any fader on the current layer



Fader Assign

The fader assign function works in an identical manner to the console however owing to the different user interfaces please note the following:

NOTE: If the LCD is closed with the 'X' close button or the right-click drop-down the Fader Assign mode remains active and the virtual Si may appear not to work,



Security

Security has no practical application and the button is therefore removed from the main MENU options.

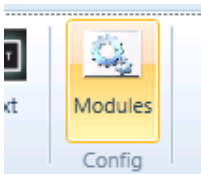
Adding Modules & Stageboxes

Adding Modules

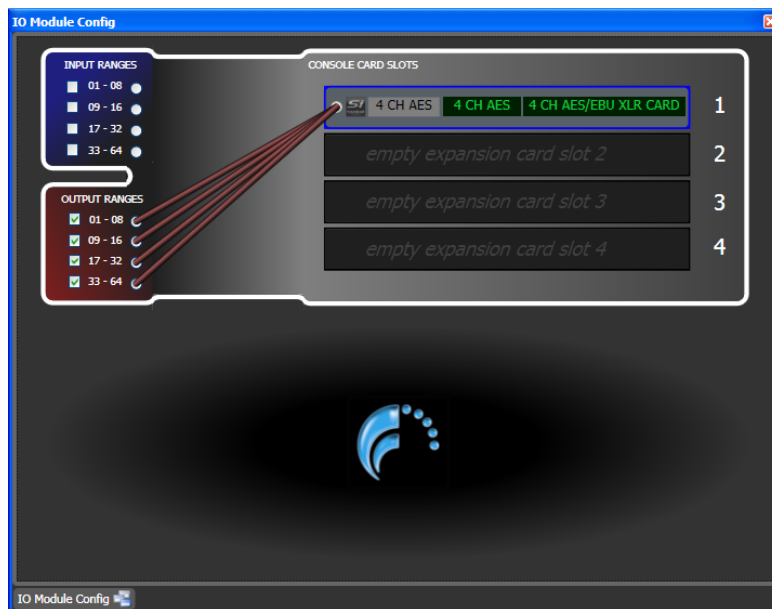
Modules – Displays the I/O Module Configuration panel, allowing addition, editing and deleting of I/O Modules.

The CONFIG window allows the user to add and set-up 'virtual' cards and stageboxes that may be used in a show.

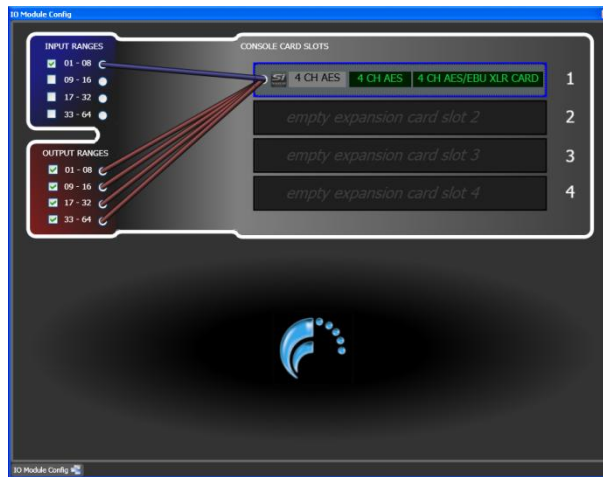
Click on the MODULES button to open the window:



Right Click on an empty slot to bring up a context menu allowing an option card to be added...



The names of the card (in green) can be edited to help give meaning to the card or application. These names will then be used on the console touch screen.



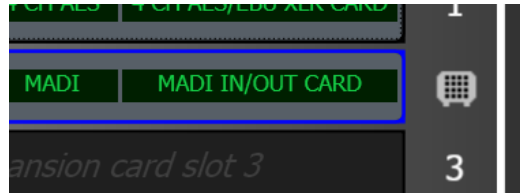
NOTE: When a card is added, the system will by default set all OUTPUT routing switches ‘ON’.

To enable the external inputs to the option card to be routed to the Si expansion bus, one or more of the input ranges must be enabled, this is achieved by ‘clicking’ one of the four available input ranges; this action simulates the setting of the physical DIP switches on the option card.

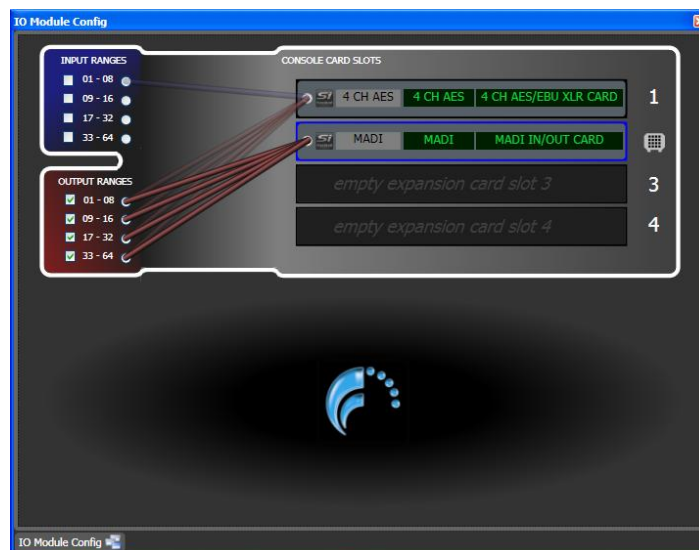
NOTE: For detailed information regarding DIP switch settings please see: [Option Slot & Option Card User Guide V1.3.0](#) available for download from the Si web page.

Adding Stageboxes

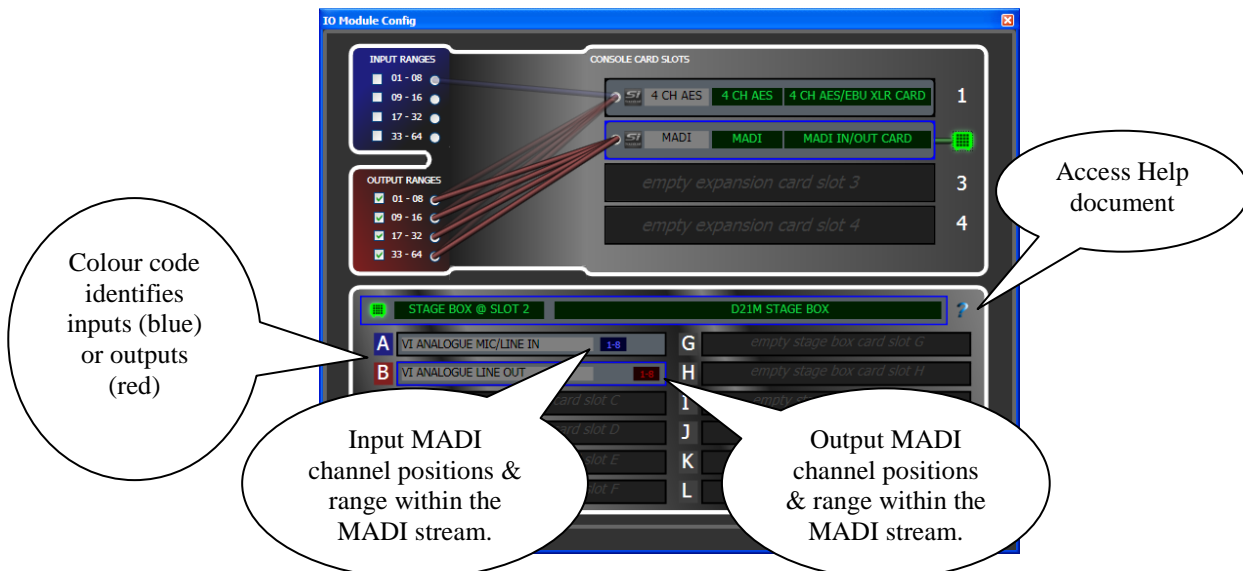
If you are adding a MADI card a stagebox icon will appear beside the card prompting you that a stagebox may be connected to this card:



Click the grey stagebox icon to ‘connect’ the stagebox and begin configuring the modules...



To configure the stagebox ‘right click’ on any slot to remove a card or add a card. For help in understanding the various configurations click on the ‘?’ icon to open a browser and download copy of the [Soundcraft Studer I/O Racks manual](#) which describes the rules that govern legal card configurations.



This configuration shows both cards receiving signals from all channels of the Si expansion bus, but the AES card is only routed to expansion bus inputs 1-8 whilst the MADI card is routed to inputs 17 to 64.

It is possible to rename the stagebox short and long names in the same manner as for renaming option cards.

NOTE: Some D21m cards including MADI and CobraNet™ provide the facility to ‘shut-down’ channels in order that they do not occupy all the MADI channels in the link back to the console. In these cases a ‘drop-down’ is provided beside the MADI channel position indicator to allow this to be set; it is important this matches the switch setting of the card in the stagebox else an I/O conflict may result.

NOTE: As MADI channels are allocated according to their position in a rack care must be taken when using multiple stageboxes to ensure a valid configuration...

Example 1:

Stagebox 1 is a Vi stagebox with 8x 8 channel mic cards in slots A-H and is using MADI card 1 with channels 1-32 enabled.

Stagebox 2 is a Compact Stagebox with 2x 16 channel mic cards in slots A/B and C/D. and is using MADI card 2 with channels 33-64 enabled.

In this example there would be no access to the audio from Stagebox 2 since the audio cards would be occupying MADI channels 1-32 but the MADI card in the console is enabled for channels 33-64 (to avoid conflict).

To correct the situation swap the two stage boxes and use cards E-H on the Vi stagebox,

Once the option cards are configured opening the touch screen will reflect the available patching to the option cards and the changes (if any) to the default card names.



Important Notes re. Stagebox Configurations:

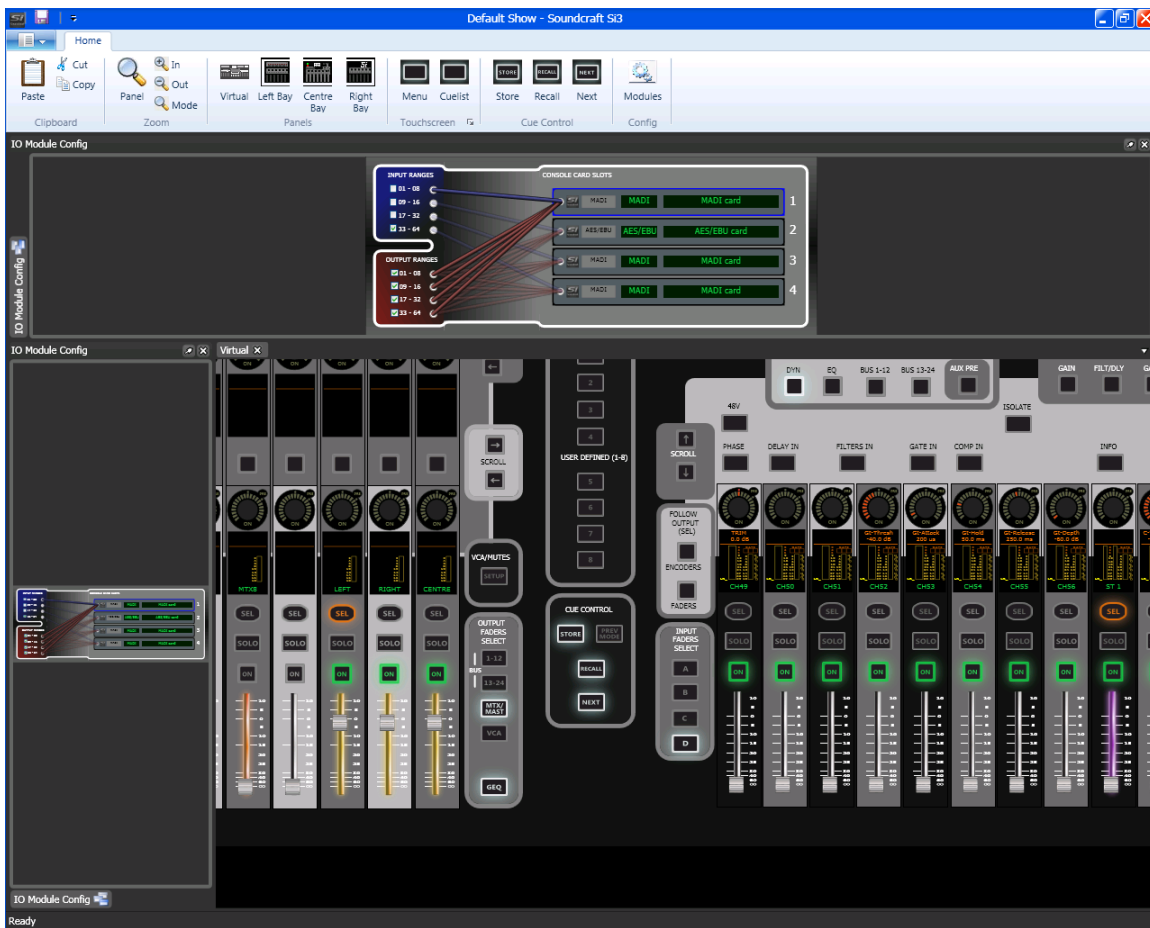
- The Virtual Si1 illustrates four slots although the actual console has only two physical positions accessible however, owing to the way the option slot system works there is no need to choose which slots you use and there are no application issues should you create an Si1 project with more than two cards, other than the inability to create this in the 'real world'.
- The system requires that the setting of the INPUT and OUTPUT routing switches on the 'virtual' system match any 'physical' cards installed in the console. Refer to the *Si Option Card User Guide* for more information on this topic.
- The editor cannot prevent setting of 'illegal' configurations; details of possible configurations are included in the *Soundcraft Studer I/O Racks* manual.

Docking Window

A new feature added to the Virtual Si is the ability to dock configuration windows; to dock a window 'CLICK & DRAG' the window to the TOP/BOTTOM/LEFT or RIGHT of the screen and the 'DOCK' arrows appear, drag the cursor onto an arrow to dock it.

Once docked the window may be pinned (to remain on the screen all the time) or un-pinned when it will 'Auto Hide' once the cursor is moved off the window.

To un-dock the window 'right-click' in the 'window title bar' and select 'FLOATING'.



Other Documentation:

For instructions on how to operate the console please refer to the Si Series V4 User Guide.

For Virtual Si specific instructions please see the release notes installed with the application, nominally located in: (START) > ALL PROGRAMS > HARMAN PRO > SOUNDCRAFT > VIRTUAL SI.

Additional documents available for download include:

- Si Option Slot & Option Card User Guide
- Soundcraft Studer I_O Racks
- Studer D21m I/O System Components

Appendix A- Operation Principles & Special Keys

To switch functions in or out, use the mouse to click on the switches.

To adjust a rotary control, click and drag on the control, moving the mouse up to increase, down to decrease.

It is possible to use the mouse within most touchscreen pages, including pages displaying lists. To select an item, click on it once. If it is editable, click once again, and a drop-down list will appear. Click on the desired item to select it, and again to close the drop-down list. The item will be changed. Some pages do not yet support use of the mouse, in these cases please use the ADJUST and SELECT buttons on the touchscreen panel.

It is also possible to use the keyboard within most touchscreen pages. On a page containing a list, use the up and down cursor keys to move between items. Then, press [F2] to edit that item. Use the [UP] and [DOWN] cursor keys to move within the popup menu, then [F2] again to select. In a freeform text box such as the channel rename page, simply type a channel name, then press [ENTER] to save.

Note: In the following list, virtual console keys are simply named e.g. 48V, whereas physical PC keys and mouse buttons are denoted with square brackets e.g. [LEFT CTRL].

To toggle an encoder:

Press [LEFT CTRL] + [LEFT MOUSE]

Note: Encoder ON light will light or extinguish as appropriate.

To toggle an encoder bus send level:

Press [LEFT CTRL] + hold [LEFT MOUSE]

Note: When in Bus Send mode, toggles bus send level between -infinity and 0dB.

To change an encoder aux mode:

Press AUX PRE + [LEFT CTRL] + [LEFT MOUSE]

Note: Click the AUX PRE button so that it lights up, then hold down the left control key and click on the encoder.

To interrogate a function e.g. 48V:

Hold [LEFT MOUSE] + 48V

Note: SEL buttons on all channels that have 48V set will light.

To enter interrogate mode e.g. 48V:

Press [LEFT SHIFT] + [LEFT MOUSE] + 48V

Note: Interrogate is only active whilst [LEFT SHIFT] is held down

Note: SEL buttons on all channels that have 48V set will light, clicking on other channel SELs will toggle 48V on those channels.

To reset a function e.g. 48V:

Press [LEFT SHIFT] + 48V + CLEAR

Note: 48V on all channels is cleared.

To copy a channel:

[LEFT SHIFT] + ALT

Note: Press SEL on the source channel.

Press SEL on destination channels as required.

To rename a channel on an OLED:

Press [ENTER] or [F2] or double-click.

Press [ENTER] or [F2] to finish editing.

To pan the virtual console:

Press [RIGHT CTRL] + [RIGHT SHIFT] + [LEFT MOUSE]

Note: Moving the mouse will drag the panel (performance will depend on system and zoom level).

To zoom the virtual console in or out:

Press [RIGHT CTRL] + [RIGHT SHIFT] + [MOUSE WHEEL]

Note: Performance will depend on system and zoom level.

Support

If these notes do not resolve any issues you may have, please contact Soundcraft Customer Services:

Email: soundcraft.support@harman.com

Web: http://www.soundcraft.com/support/uk_support.aspx

Tel: Soundcraft Customer Services Manager +44 (0) 1707 668 298