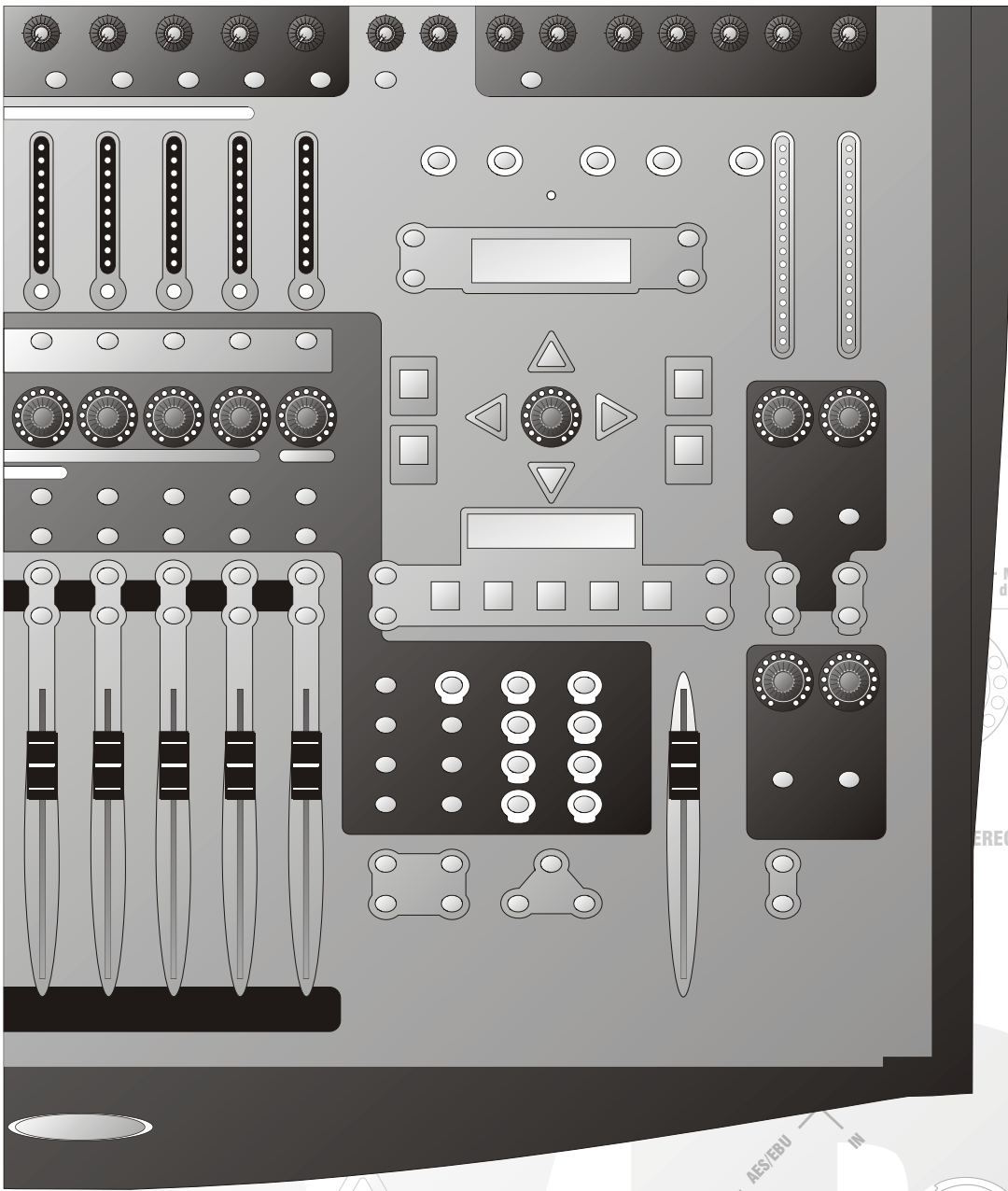
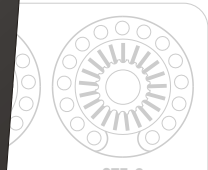


Soundcraft



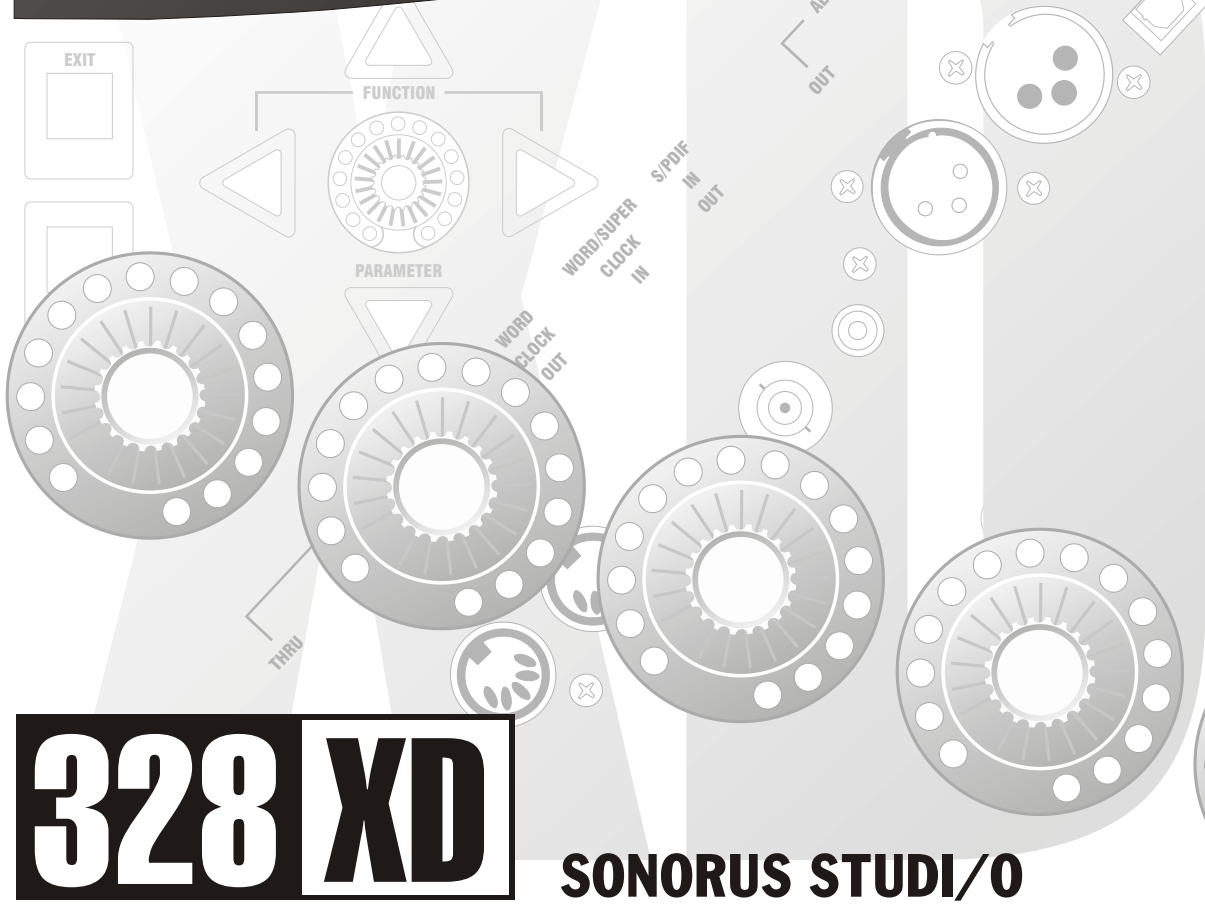
MIX — RIGHT
dBFS



STEREO INPUTS

SELECT

MUTE



328 XD

SONORUS STUDI/O

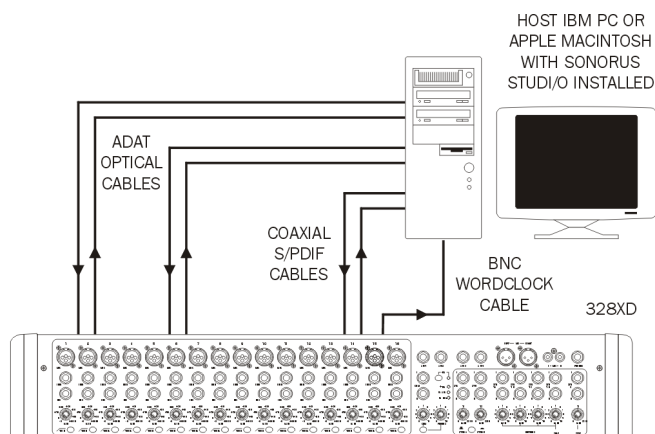
328XD AND SONORUS STUDI/O

Connecting the system	2
328XD Configuration	3
Studi/O Configuration	4

CONNECTING THE SYSTEM

Audio Connections

Connect audio connections as shown in the diagram below. ADAT Optical cables must be connected from the ADAT Out ports of the Sonorus StudI/O card to the ADAT In ports of the 328XD and vice versa. With the optional Sonorus syncplate fitted a BNC wordclock cable should be connected from the 328XD wordclock output to the Sonorus syncplate wordclock input.



The ADAT connections allow digital transfer of either direct output for input channels 1-16 to the Sonorus StudI/O card, or the 328XD's 8 Group outputs.

328XD CONFIGURATION

Wordclock

To configure the 328XD as the wordclock host, enter the 328XD Menu pages by pressing the <MENU> button on the right hand side of the LCD display. Using the PARAM encoder, scroll up or down until the 'Clock Source Sel' menu is highlighted, and press <ENTER>. Here, either the internal 44.1kHz clock or the internal 48kHz clock must be selected, depending on the sampling rate at which work is to be done. Press <ENTER> to set the sample rate and <MENU> to return to the menu pages.

```
<Wordclock Src.>  
Internal:48.0kHz
```

To ensure that the 328XD Tape Ports are set to ADAT to work with the Sonorus Studl/O, enter the 328XD Menu pages by pressing the <MENU> button on the right hand side of the LCD display. Using the PARAM encoder beneath the display, scroll up or down until the 'Tape Port Select' menu is highlighted. Press <ENTER> and press the Up cursor arrow until the '<Tape Ch17-24 >' menu page is displayed. Using the PARAM encoder set the Bank Source to ADAT.

```
<Tape Ch17->24 >  
Bank Source:ADAT
```

Press the Down cursor key to set the wordlength. The Sonorus Studl/O is capable of 24-bit recording, and so for optimum results, 24-bit wordlength can be selected here. If your audio sequencer software does not allow 24-bit recording, 20-bit or 16-bit should be selected. The sequencer manuals should be consulted for further information. The wordlength is set on the 328XD with the PARAM encoder. Press <ENTER> to set the wordlength and <MENU> to return to the menu pages.

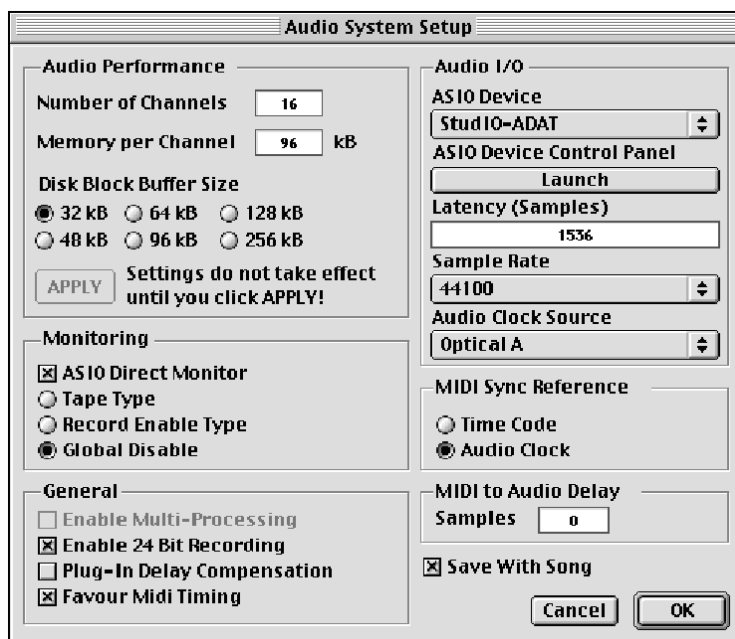
```
<Tape Ch17->24 >  
Wordlength: 20
```

STUDI/O CONFIGURATION

Wordclock

The Sonorus StudI/O must now be set up to receive the wordclock transmitted by the 328XD. Open the Audio System Setup window Panel from within your chosen sequencer, Cubase VST 4.1 on the Macintosh is used in this example.

Click on the drop down menu and select Optical A as the "Audio Clock Source", the sample rate will change to follow the internal frequency of the 328XD.

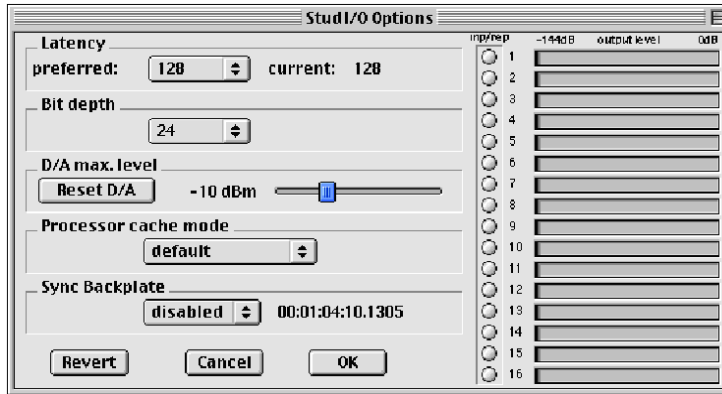


If the Sonorus Syncplate is not fitted, the Sonorus StudI/O must synchronise to the wordclock from one of its ADAT inputs. Set the StudI/O to use the clock source from the ADAT input as required using the method described above.

If the Sonorus Syncplate is fitted, the StudI/O should synchronize to the clock on the BNC wordclock input. If the backplate is fitted then you can also run the Sonorus StudI/O as a host device by setting the "Audio Clock Source" to Internal. When using this method you must connect a wordclock cable from the backplate Wordclock Output to the 328XD BNC Wordclock Input. In this instance, ensure you select 'External: WClock' from the 328XD Clock Source Select menu to make the console synchronize to the Sonorus StudI/O clock.

Audio Data

The Sonorus StudI/O must now be set up to transmit and receive audio data to and from the 328XD. Launch the ASIO devices control panel from the previous page. Here you can adjust the bit rate of the data passing to and from the 328XD. For the highest quality results, select 24-bit, as the 328XD is capable of transmitting and receiving all 24 bit signals.



Please refer to the Sonorus StudI/O documentation for other system settings.

SOUNDCRAFT

HARMAN INTERNATIONAL INDUSTRIES LTD
CRANBORNE HOUSE
CRANBORNE ROAD
POTTERS BAR
HERTS EN6 3JN UK
TEL: +44 (0) 1707 665000
FAX: +44 (0) 1707 660742
EMAIL: info@soundcraft.com

SOUNDCRAFT USA

1449 DONELSON PIKE
NASHVILLE TN 37217 USA
TEL: 1-615-360-0471
FAX: 1-615-360-0273
EMAIL: soundcraft-usa@harman.com

www.soundcraft.com